

5546-002

THIS INSTRUMENT PREPARED BY
DAVID P. LINDLEY
OF
CAULFIELD and WHEELER, INC.
SURVEYORS - ENGINEERS - PLANNERS
7900 GLADES ROAD, SUITE 100
BOCA RATON, FLORIDA 33434 - (561)392-1991

ENCORE

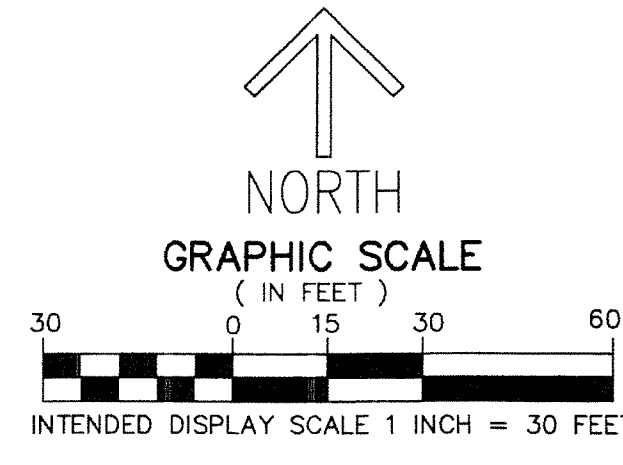
BEING A REPLAT OF A PORTION OF LOT 4, BLOCK 3, PALM BEACH PLANTATIONS PLAT NO. 1,
AS RECORDED IN PLAT BOOK 10, PAGE 20 OF THE PUBLIC RECORDS OF PALM BEACH COUNTY, FLORIDA,
LYING IN SECTION 1, TOWNSHIP 44 SOUTH, RANGE 42 EAST,
PALM BEACH COUNTY, FLORIDA

190

STATE OF FLORIDA
COUNTY OF PALM BEACH
THIS PLAT WAS FILED FOR
RECORD AT _____ M.
THIS _____ DAY OF _____
A.D. 201____ AND DULY RECORDED
IN PLAT BOOK _____ AND _____
PAGES _____ AND _____
SHARON R. BOCK
CLERK AND COMPTROLLER

BY: _____
DEPUTY CLERK

SHEET 2 OF 2



LEGEND ABBREVIATIONS

- Δ - DELTA (CENTRAL ANGLE)
- L - ARC LENGTH
- R - RADIUS
- CB - CHORD BEARING
- CD - CHORD DISTANCE
- CL - CENTERLINE
- LB - LICENSED BUSINESS
- LAE - LIMITED ACCESS EASEMENT
- O.R.B. - OFFICIAL RECORD BOOK
- UE - UTILITY EASEMENT
- N - NORTHING
- E - EASTING
- ⊙ - INDICATES NAIL AND DISK
- △ - INDICATES HORIZONTAL CONTROL POINT
- - INDICATES SET 4" X 4" X 24" CONCRETE PERMANENT REFERENCE MONUMENT WITH ALUMINUM DISK STAMPED LB3591 UNLESS OTHERWISE NOTED.

NOTES COORDINATES, BEARINGS AND DISTANCES

- COORDINATES SHOWN ARE GRID
- DATUM = NAD 83 1990 ADJUSTMENT
- ZONE = FLORIDA EAST
- LINEAR UNIT = US SURVEY FEET
- COORDINATE SYSTEM 1983 STATE PLANE
- TRANSVERSE MERCATOR PROJECTION
- ALL DISTANCES ARE GROUND
- SCALE FACTOR = 1.0000375
- GROUND DISTANCE X SCALE FACTOR = GRID DISTANCE
- BEARINGS AS SHOWN HEREON ARE GRID DATUM, NAD 83 1990 ADJUSTMENT, FLORIDA EAST ZONE.

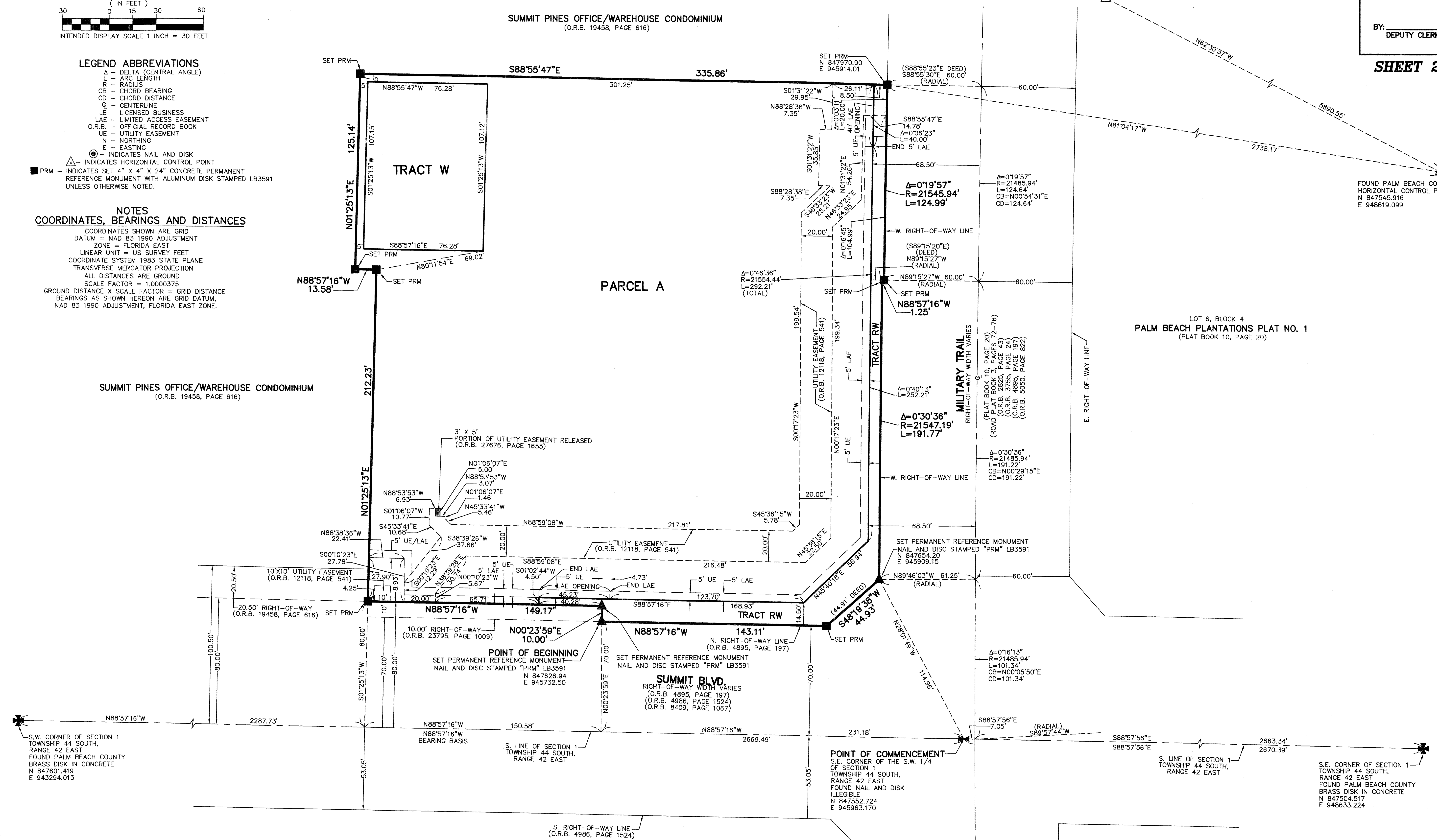
SUMMIT PINES OFFICE/WAREHOUSE CONDOMINIUM
(O.R.B. 19458, PAGE 616)

SUMMIT PINES OFFICE/WAREHOUSE CONDOMINIUM
(O.R.B. 19458, PAGE 616)

FOUND PALM BEACH COUNTY
HORIZONTAL CONTROL POINT "SUNNY LANE"
N 850264.517
E 943393.165

FOUND PALM BEACH COUNTY
HORIZONTAL CONTROL POINT "JOT"
N 847545.916
E 948619.099

LOT 6, BLOCK 4
PALM BEACH PLANTATIONS PLAT NO. 1
(PLAT BOOK 10, PAGE 20)



S.W. CORNER OF SECTION 1
TOWNSHIP 44 SOUTH,
RANGE 42 EAST
FOUND PALM BEACH COUNTY
BRASS DISK IN CONCRETE
N 847601.419
E 943294.015

S. LINE OF SECTION 1
TOWNSHIP 44 SOUTH,
RANGE 42 EAST

POINT OF COMMENCEMENT
S.E. CORNER OF THE S.W. 1/4
OF SECTION 1
TOWNSHIP 44 SOUTH,
RANGE 42 EAST
FOUND NAIL AND DISK
ILLEGIBLE
N 847552.724
E 945963.170

S.E. CORNER OF SECTION 1
TOWNSHIP 44 SOUTH,
RANGE 42 EAST
FOUND PALM BEACH COUNTY
BRASS DISK IN CONCRETE
N 847504.517
E 948633.224